

Shapefile

.tif - .tfw

QGIS

AutoCAD
Map

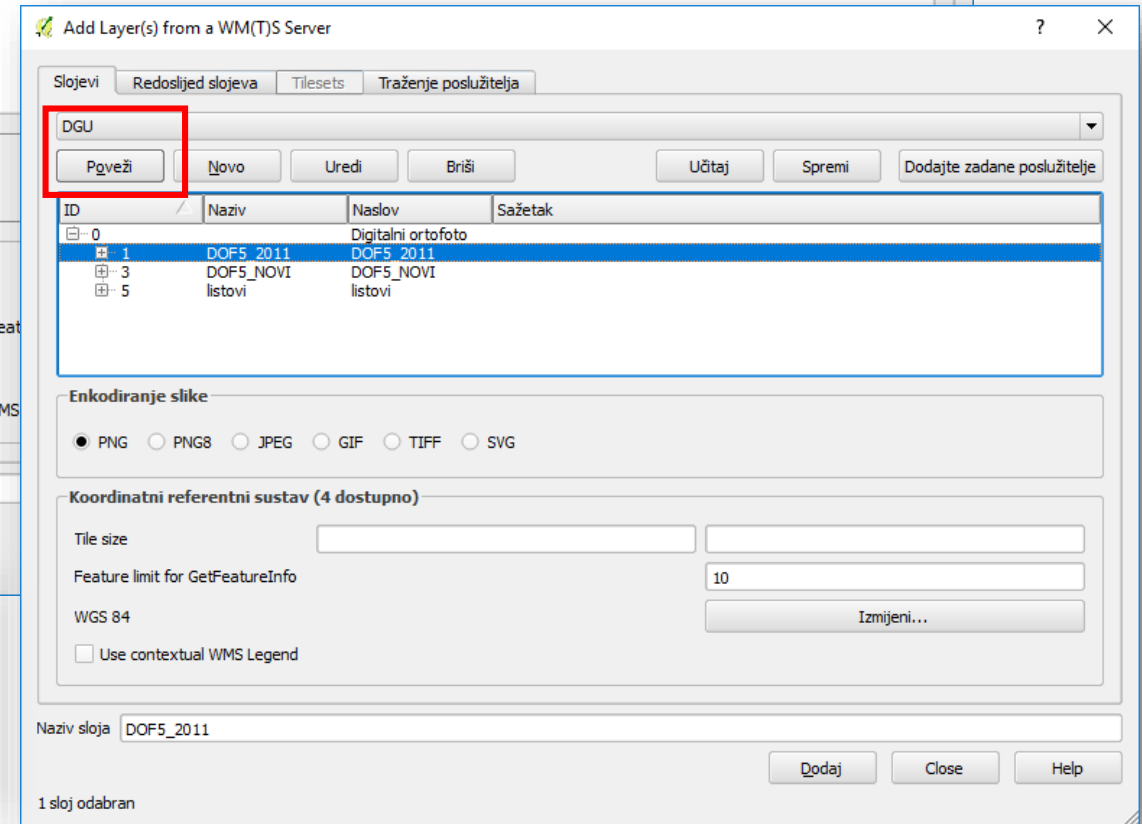
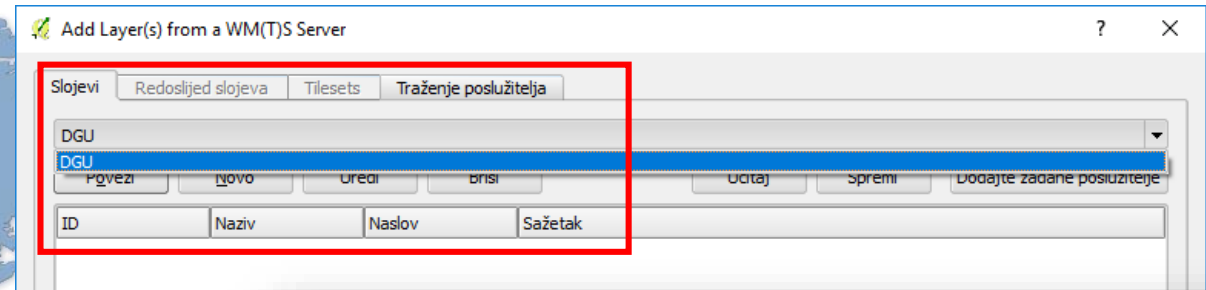
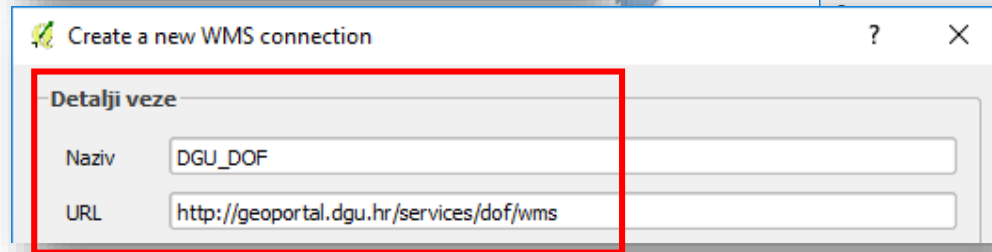
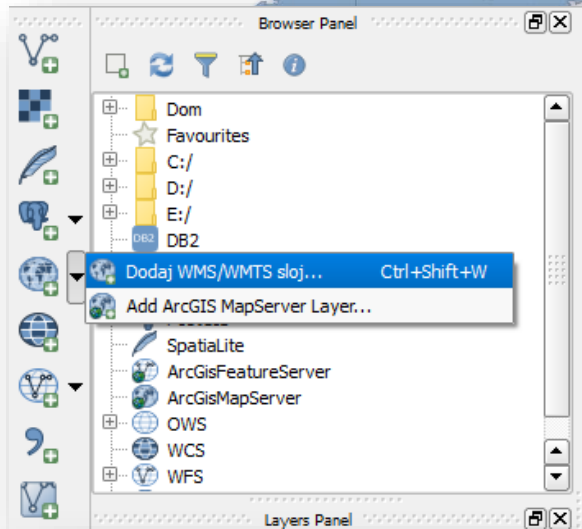


Armando Slaviček

QGIS

Dodaj WMS sloj

Web Map Service



<http://geoportal.dgu.hr/services/dof/wms>

Odredi koordinatni referentni sustav

Add Layer(s) from a WM(T)S Server

Slojevi: Redoslijed slojeva | Tilesets | Traženje poslužitelja

DGU

Poveži | Novo | Uredi | Briši | Učitaj | Spremi | Dodajte zadane poslužitelje

ID	Naziv	Naslov	Sažetak
0		Digitalni ortofoto	
1	DOF5_2011	DOF5_2011	
3	DOF5_NOVI	DOF5_NOVI	
5	listovi	listovi	

Enkodiranje slike

PNG PNG8 JPEG GIF TIFF SVG

Koordinatni referentni sustav (4 dostupno)

Tile size: [] []

Feature limit for GetFeatureInfo: 10

WGS 84

Use contextual WMS Legend

Naziv sloja: DOF5_2011

1 sloj odabran

Odabir koordinatnog referentnog sustava

Definirajte koordinatni referentni sustav sloja:
Izgleda da ovaj sloj nema specifikaciju projekcije. Prema zadanim postavkama ovaj sloj sada ima projekciju postavljenu prema projektu, no to možete promijeniti odabirom različite projekcije.

Filter: []

Recently used coordinate reference systems

Koordinatni referentni sustav

Koordinatni referentni sustav (4 dostupno)

Tile size: []

Feature limit for GetFeatureInfo: []

HTRS96 / Croatia TM

Use contextual WMS Legend

Coordinate reference systems of the world

Koordinatni referentni sustav	ID autoriteta
Geografski koordinatni sustavi	
WGS 84	EPSG:4326
Projicirani koordinatni sustavi	
Transverse Mercator	
HTRS96 / Croatia TM	EPSG:3765
Korisnički definirani koordinatni sustavi	

Selected CRS: HTRS96 / Croatia TM

+proj=tmerc +lat_0=0 +lon_0=16.5 +k=0.9999 +x_0=500000 +y_0=0 +ellps=GRS80 +towgs84=0,0,0,0,0,0,0 +units=m +no_defs

OK | Cancel | Help

HTRS96 / Croatia TM

+proj=tmerc +lat_0=0 +lon_0=16.5 +k=0.9999 +x_0=500000 +y_0=0 +ellps=GRS80 +towgs84=0,0,0,0,0,0,0 +units=m +no_defs

HTRS96 / Croatia TM



Preuzimanje: Shapefile (ESRI) - an area from planet.osm

<https://extract.bbbike.org/>

en de fr - about extracts -

Format show langit 31 km²

Your email address ~0.3 MB

Name of area to extract 2 min

extract

Select a different area

- add points to polygon
- resize or drag polygon

- Select a **Format**, enter **Your email address** and **Name of area to extract**.
- Click the **extract** button. Wait for email notification and download the map. Done!

AS Slaviček

Donate

home | help | status | download | commercial support

© 2018 BBBike.org by Wolfram Schneider
Map data © OpenStreetMap.org contributors

Armando Slaviček 16.04187 45.81998

Shapefile (ESRI)

Thanks - the input data looks good.

It takes between 2-7 minutes to extract an area from planet.osm, depending on the size of the area and the system load. You will be notified by e-mail if your extract is ready for download. Please follow the instruction in the email to proceed your request.

Area: 'Zagreb' covers 31 square km
Coordinates: [[["15.935","45.777"],["16.031","45.778"],["16.018","45.82"],["15.975","45.822"],["15.943","45.814"]]]
Format: Shapefile (Esri)

You can monitor the status of your request on the [server status](#) page.

Press the [back button](#) to get the same area in a different format, or to request a new area.

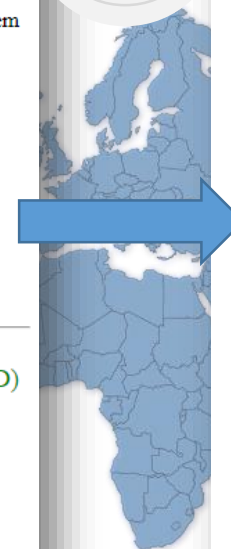
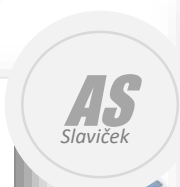
Your support keeps the BBBike extract service on the air! Please make a donation with PayPal or bank wire transfer. We need to raise 10 Euro (12 USD) by the end of the day, or 300 Euro (350USD) per month to cover the server costs. Many thanks!

Donate



[home](#) | [help](#) | [status](#) | [download](#) | [commercial support](#)

(©) 2018 BBBike.org by Wolfram Schneider
Map data (©) OpenStreetMap.org contributors



Hi,

your requested OpenStreetMap area 'Zagreb' was extracted from planet.osm
To download the file, please click on the following link:

https://download.bbbike.org/osm/extract/planet_15.935_45.777_7022889a.osm.shp.zip

The file will be available for the next 48 hours. Please download the file as soon as possible.

Name: Zagreb
Coordinates: 15.935,45.777 x 16.031,45.822
Script URL: https://extract.bbbike.org/?sw_lng=15.935&sw_lat=45.777&ne_lng=16.031&ne_lat=45.822
Square kilometre: 37
Granularity: 100 (1.1 cm)
Format: shp.zip
File size: 2.3 MB zip archive, 6.9 MB uncompressed
SHA256 checksum: 729c539cecb40b76fa981f7ed79415d39d2d77d69f67a79ac899d5b9cf6671fa
MD5 checksum: 386b7bf28cc191246015473b60c33584
Last planet.osm database update: Thu Feb 1 11:29:42 2018 UTC
License: OpenStreetMap License

Please read the extract online help for more informations:
<https://extract.bbbike.org/extract.html>

We appreciate any feedback, suggestions and a donation!
You can support us via PayPal or bank wire transfer.

<https://www.bbbike.org/community.html>

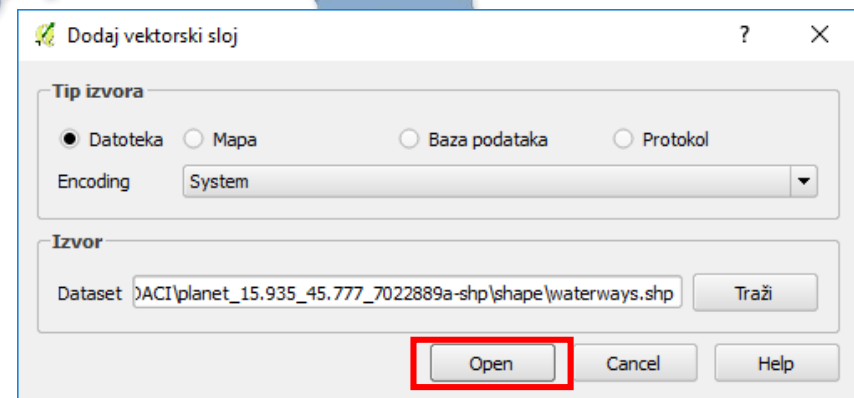
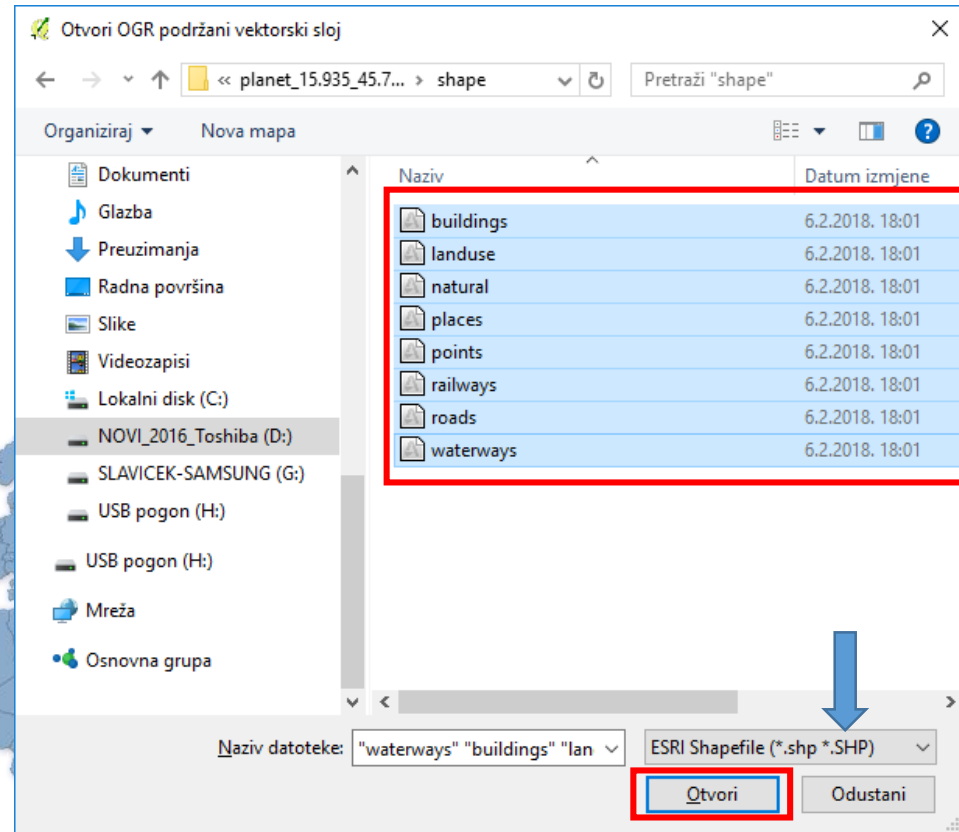
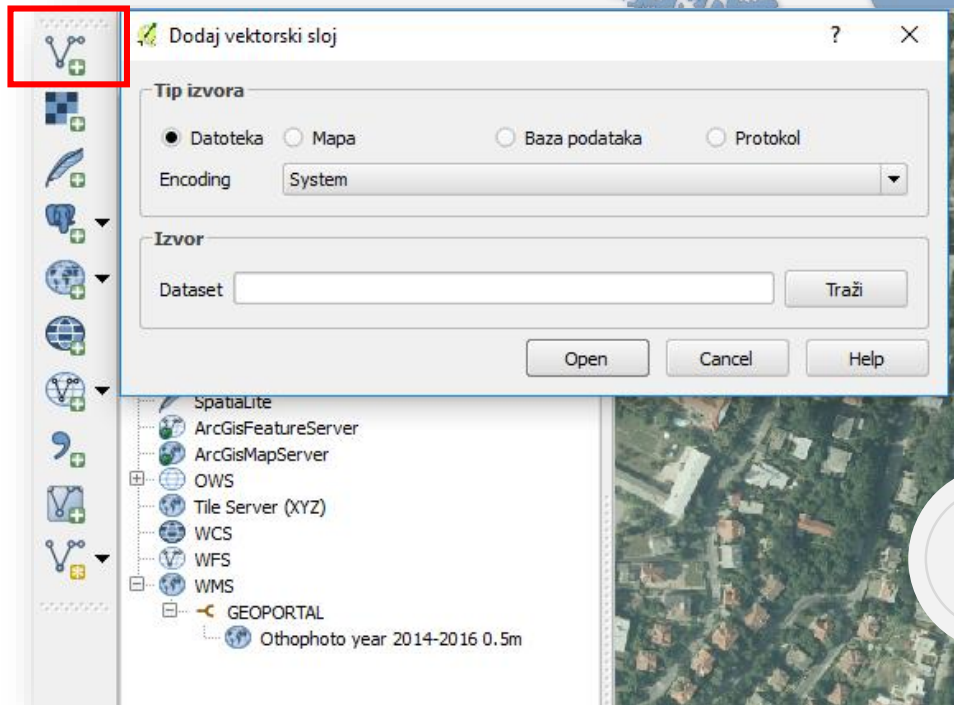
You can donate any free amount you want. We are happy for every donation, for 5, 10, 20, or 50 Euro. Whatever you think the service is worth for you, or you can afford. We need to raise 10 Euro (12 USD) by the end of the day or 300 Euro (350USD) per month to cover the server costs.
Your donation helps to pay for hosting the service. Many thanks!

Sincerely, the BBBike extract Fairy

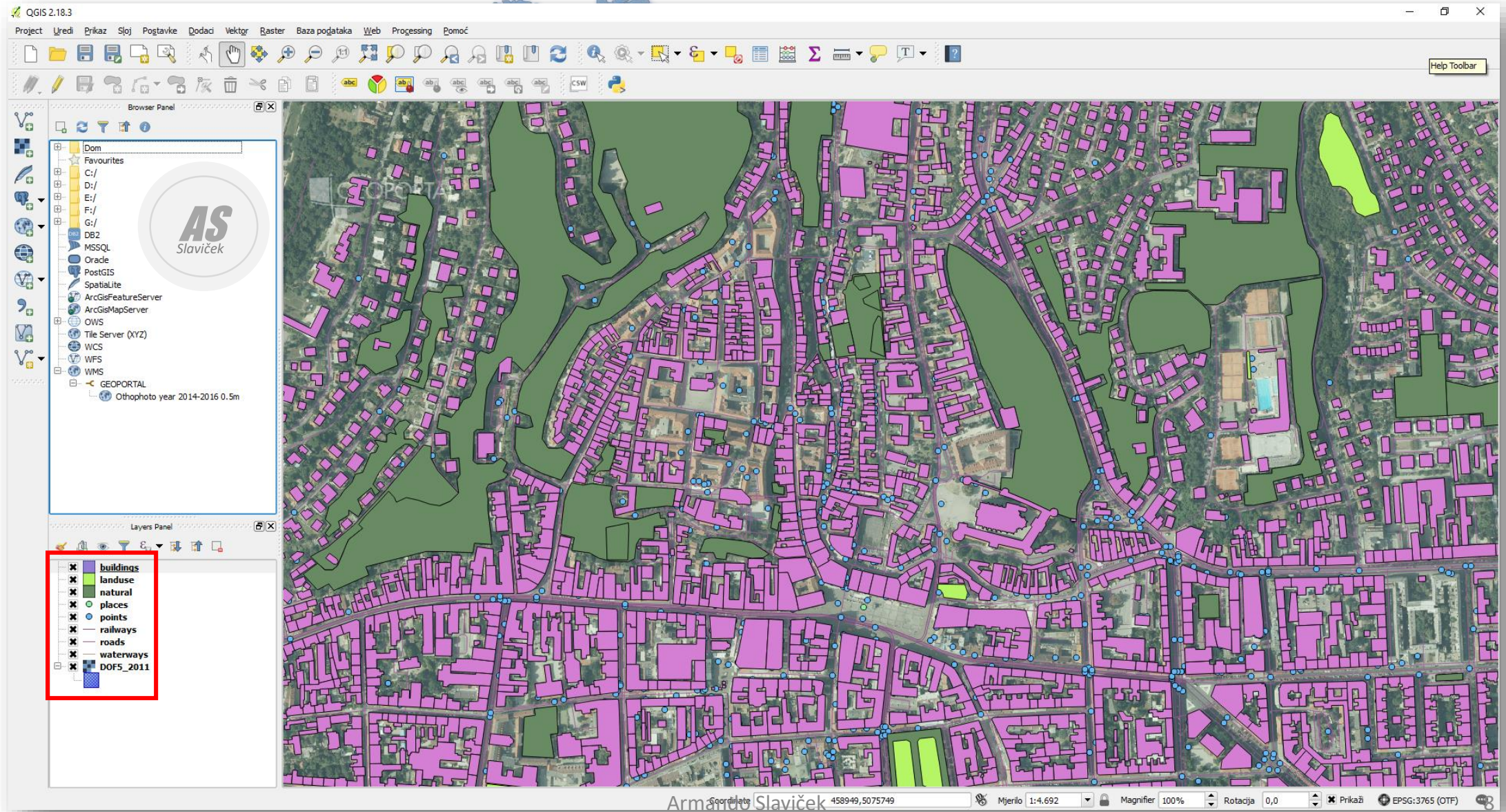
The shapefile format is a popular geospatial vector data format for geographic information system (GIS) software. It is developed and regulated by Esri as a (mostly) open specification for data interoperability among Esri and other GIS software products.[1] The shapefile format can spatially describe vector features: points, lines, and polygons, representing, for example, water wells, rivers, and lakes. Each item usually has attributes that describe it, such as name or temperature.

QGIS

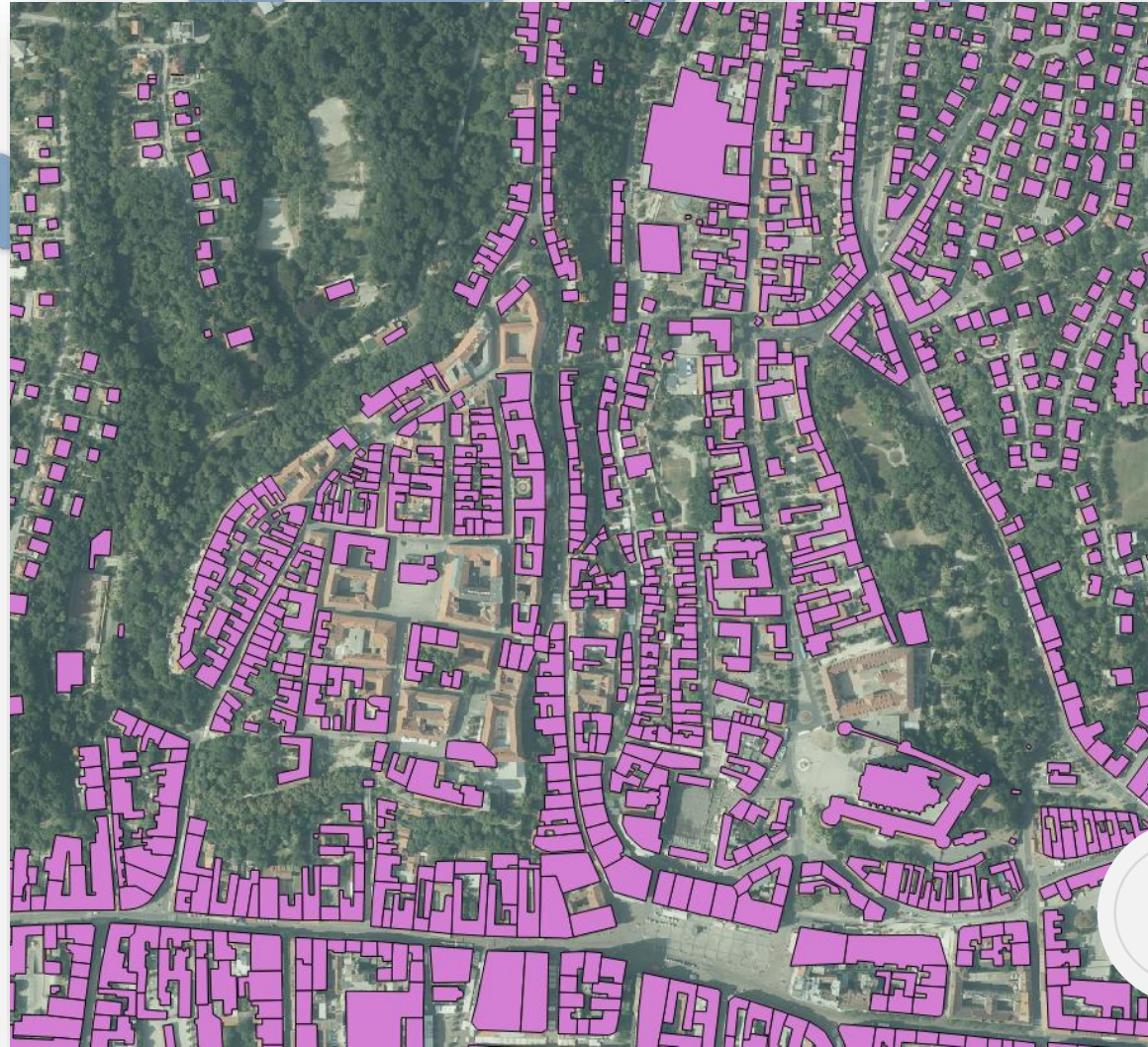
Dodaj vektorski sloj



Učitani vektorski sloj u QGIS



Spremi sliku (raster - datoteka.tif)



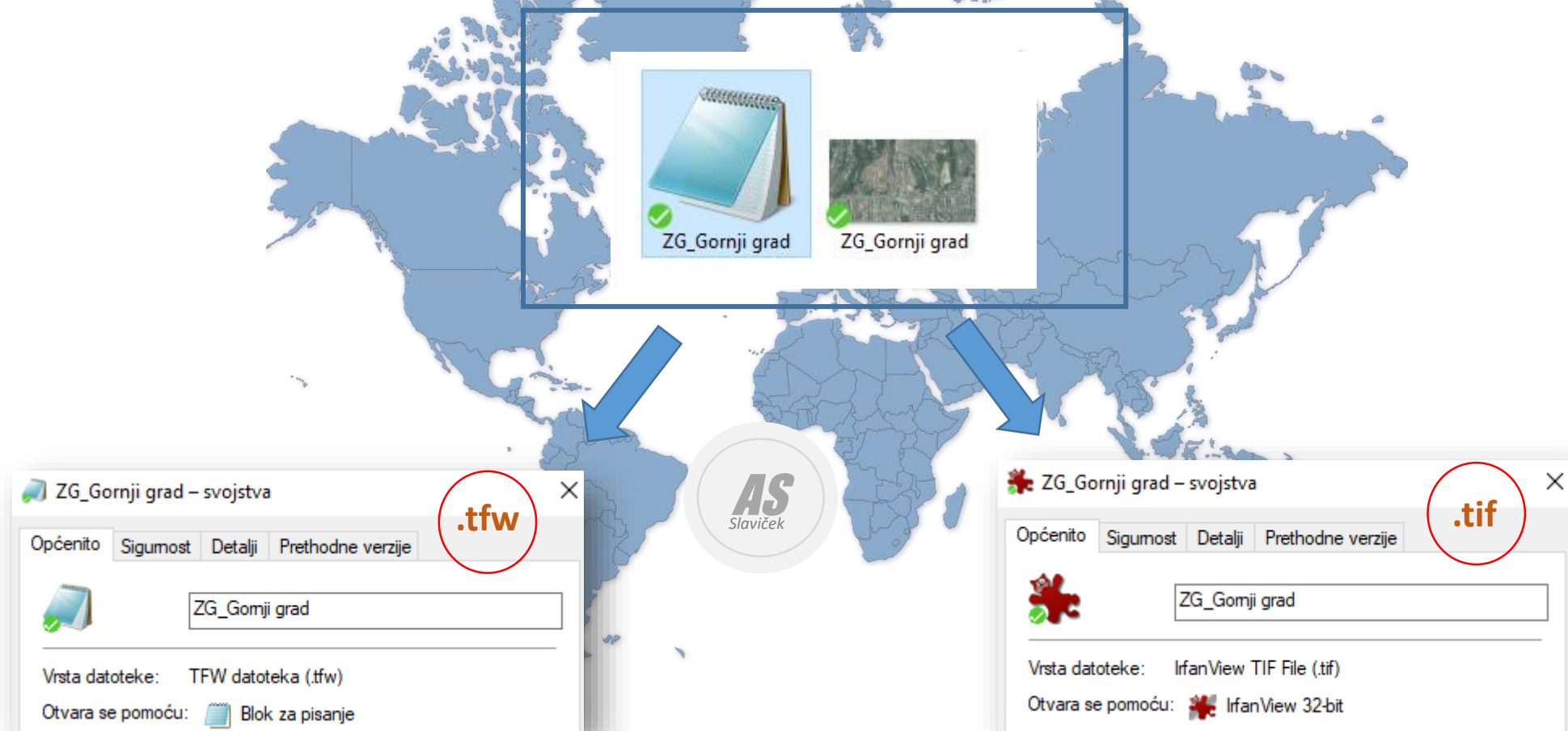
Zagreb_Gornji grad1



Zagreb_Gornji grad1



Spremi sliku (raster)



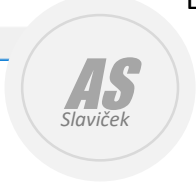
https://en.wikipedia.org/wiki/World_file

TFW datoteka?

```

ZG_Gornji gra...
Datoteka Uređivanje Oblikovanje
Prikaz Pomoć
1. 24151960539033901
0
0
-1. 24151960539033901
458431. 97381107159890234
5075753. 3031808128580451
  
```

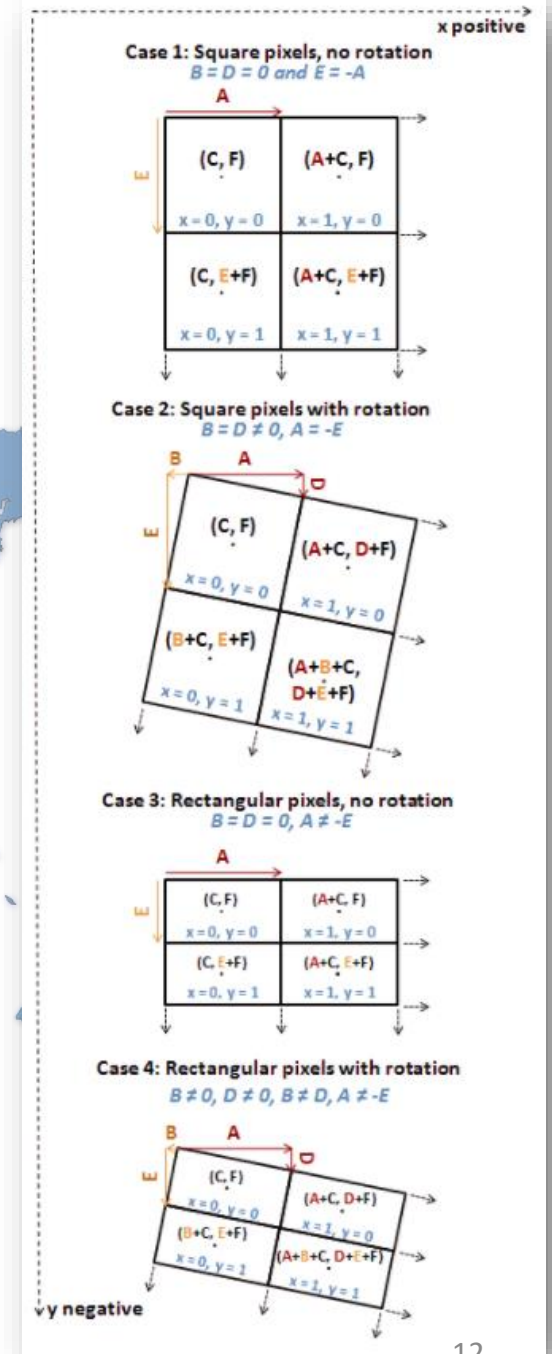
- Line 1: A: pixel size in the x-direction in map units/pixel
- Line 2: D: rotation about y-axis
- Line 3: B: rotation about x-axis
- Line 4: E: pixel size in the y-direction in map units, almost always negative
- Line 5: C: x-coordinate of the center of the upper left pixel
- Line 6: F: y-coordinate of the center of the upper left pixel



Tip datoteke (TFW) - ArcView World file for TIF image (GIS application) - sadrži informacije koje geopozicioniraju karte spremljenih u obliku slike.

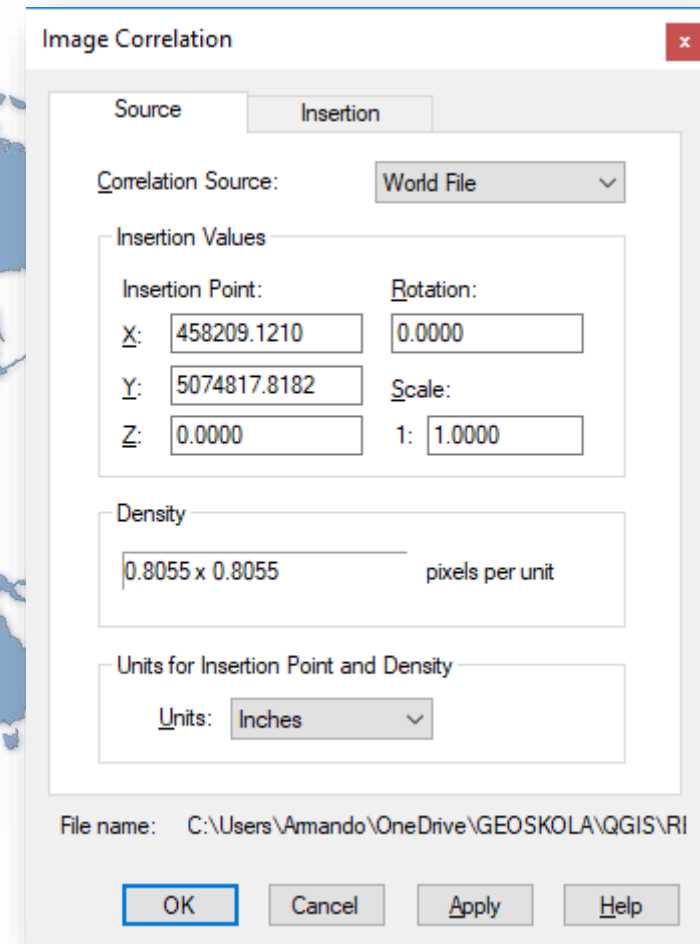
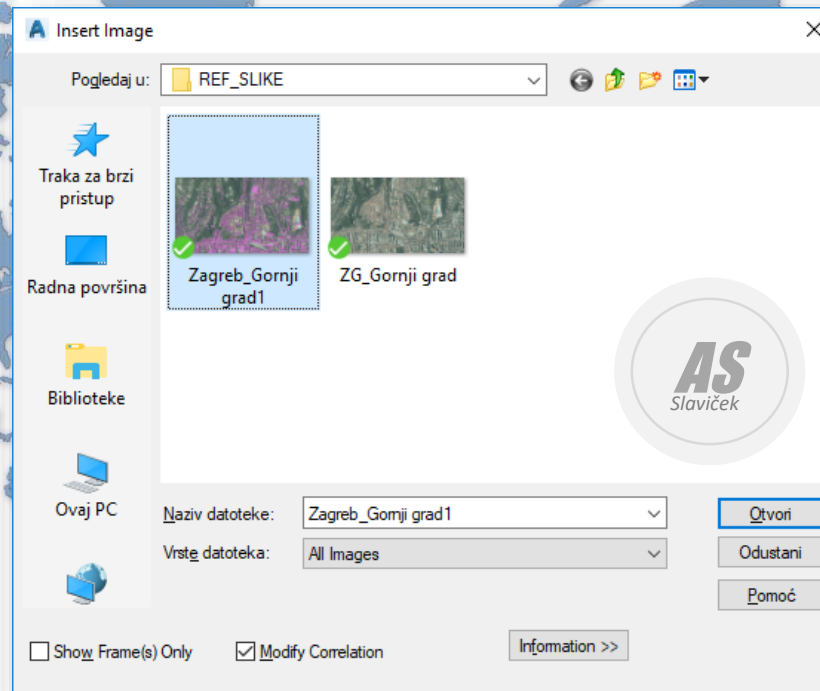
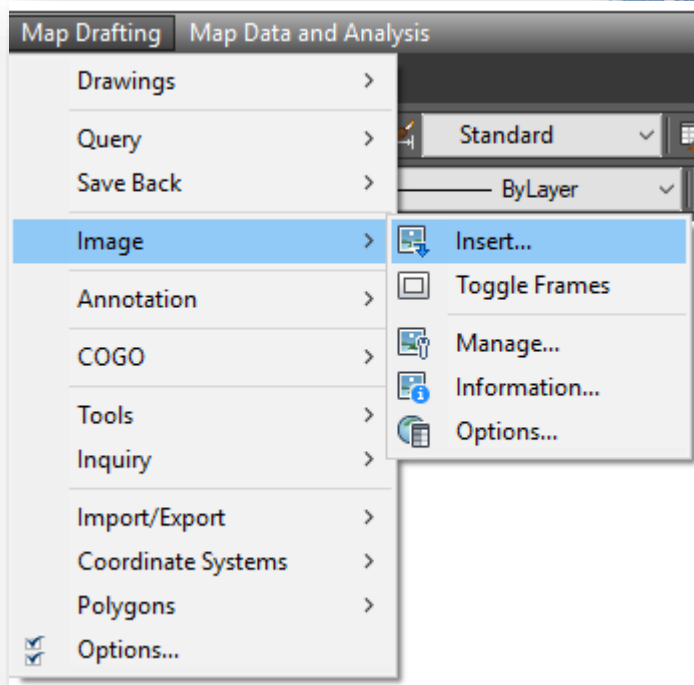
TIFF world file used by GIS applications; contains the location, scale, and rotation of a map that is stored as a TIFF image; often used for saving the world location of an aerial satellite photograph; uses the same format as JPEG World files

https://en.wikipedia.org/wiki/World_file



Umetanje rastera (datoteka.tif) u AutoCAD Map

Map Drafting – Image - Insert



Umetanje rastera (datoteka.tif) u AutoCAD Map

