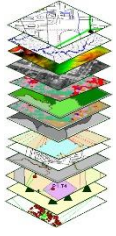
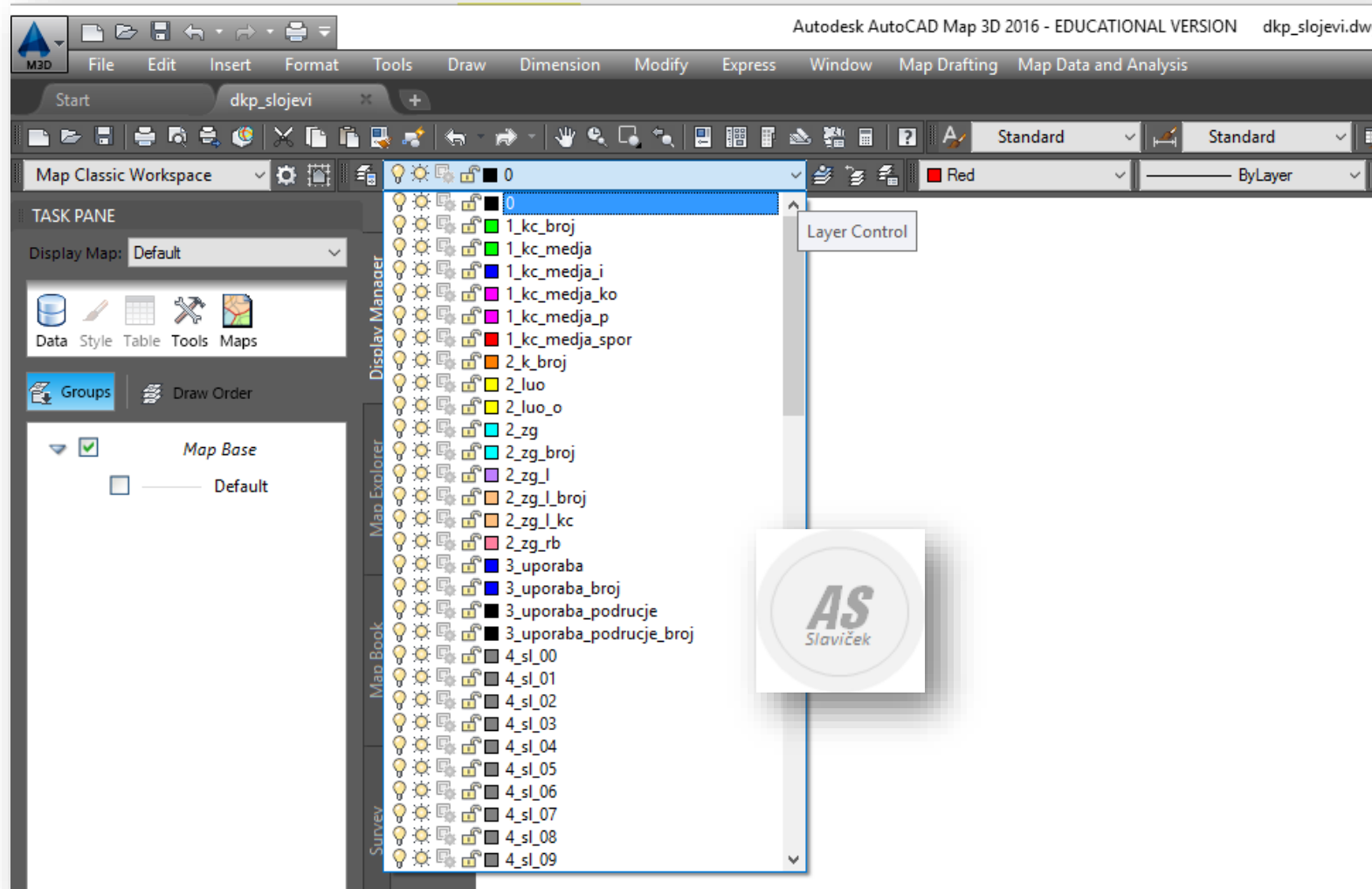
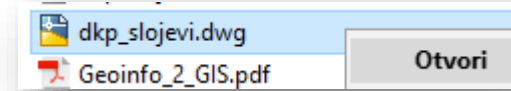


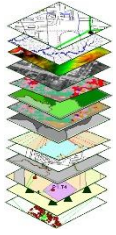
Prijenos DKP slojeva u drugi crtež

Armando Slaviček



Otvori datoteku dkp_slojevi





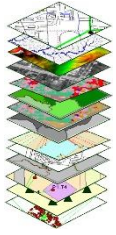
Layer States Manager

The screenshot shows the Autodesk AutoCAD Map 3D 2016 - EDUCATIONAL VERSION interface. The title bar indicates the file name is `dkp_slojevi.dwg`. The ribbon is set to the `Map Classic Workspace`. The `Layer States Manager` tool is highlighted in the ribbon, and a tooltip is displayed over it. The tooltip contains the following text:

Layer States Manager
Saves, restores, and manages named layer states

Saves the layer settings in a drawing as a named layer state. Named layer states can then be restored, edited, imported, and exported for use in other drawings.

LAYERSTATE
Press F1 for more help



Layerstate (F1)

Autodesk AutoCAD Map 3D 2016 - Help

AUTODESK® AUTOCAD® MAP 3D 2016 | HELP

Layer States Manager

Saves, restores, and manages sets of layer settings that are called layer states.

Layer States Manager

Name	Space	Save	Description
ACET-LAYISO	Model	Yes	

Layer properties to restore

- On / Off
- Frozen / Thawed
- Visibility in Current VP
- Locked / Unlocked
- Plot / No Plot
- Color
- Linetype
- Lineweight
- Transparency
- Plot Style
- New VP Frozen / Thawed

Don't list layer states in Xrefs

Restore options

- Turn off layers not found in layer state
- Apply properties as viewport overrides

Current layer state: "UNSAVED"

Layer States
Lists the layer states that have been saved in the drawing.

Don't List Layer States in Xrefs
Excludes the layer states that were saved in externally referenced drawings.

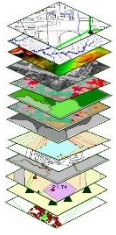
Note: Layer states that were saved in xrefs cannot be edited.

Command: _LAYERSTATE

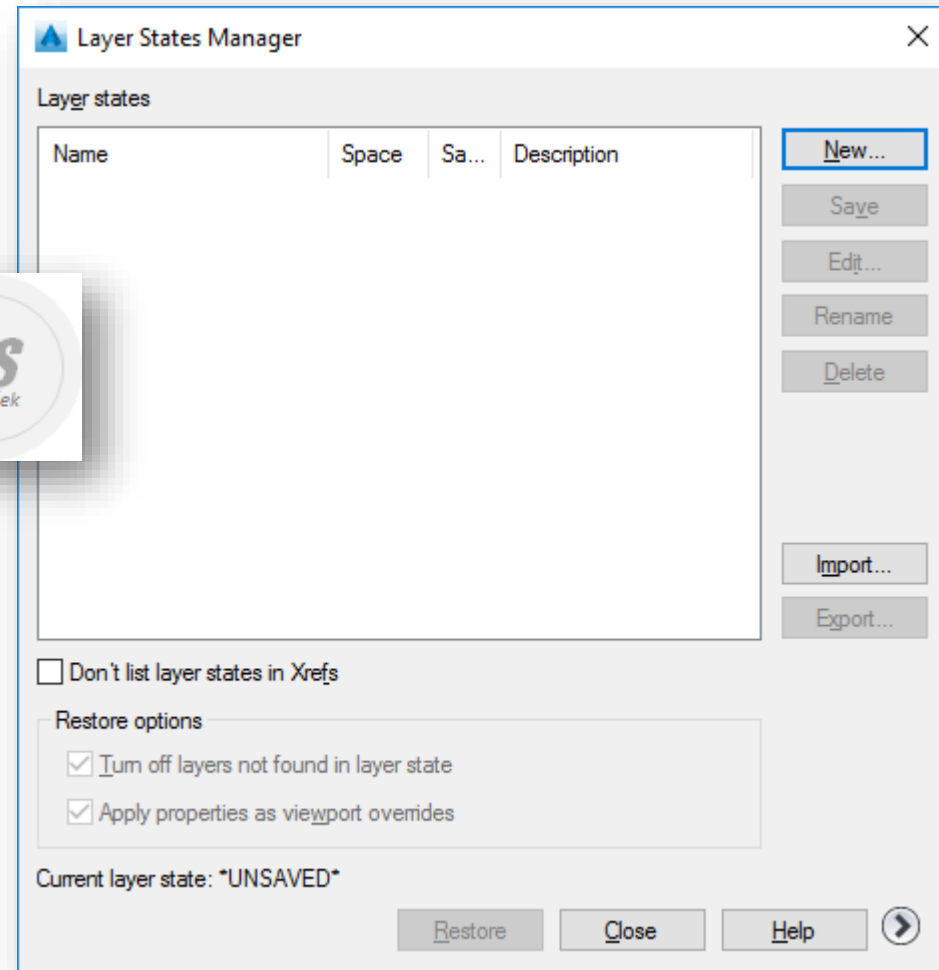
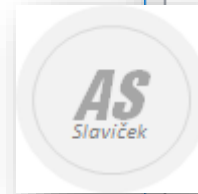
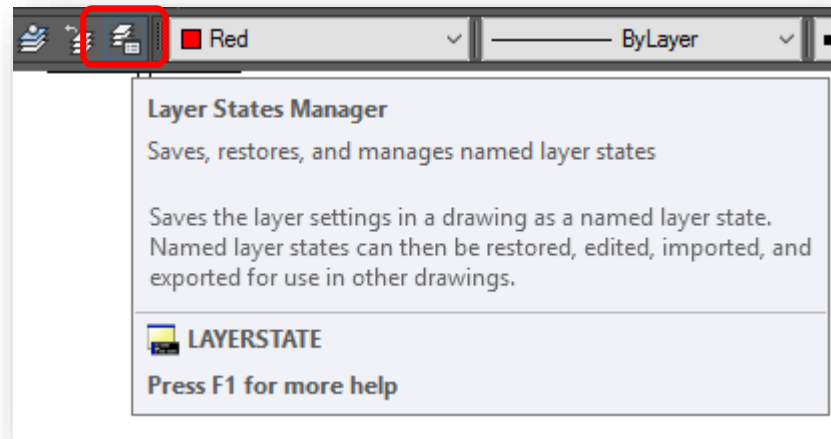
Model Layout1 +

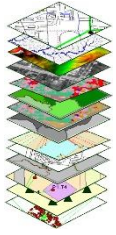
1: 0.743232 5.609698E+06, 5.139764E+06, 0.000000 MODEL

18:07 6.10.2016

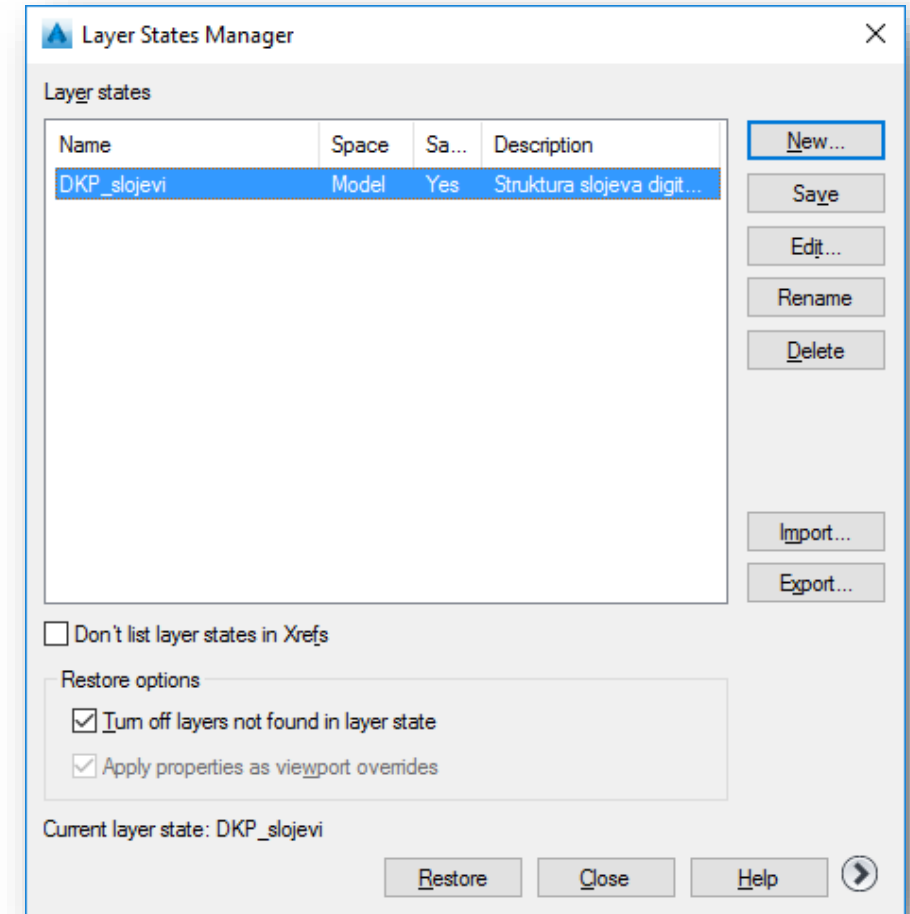
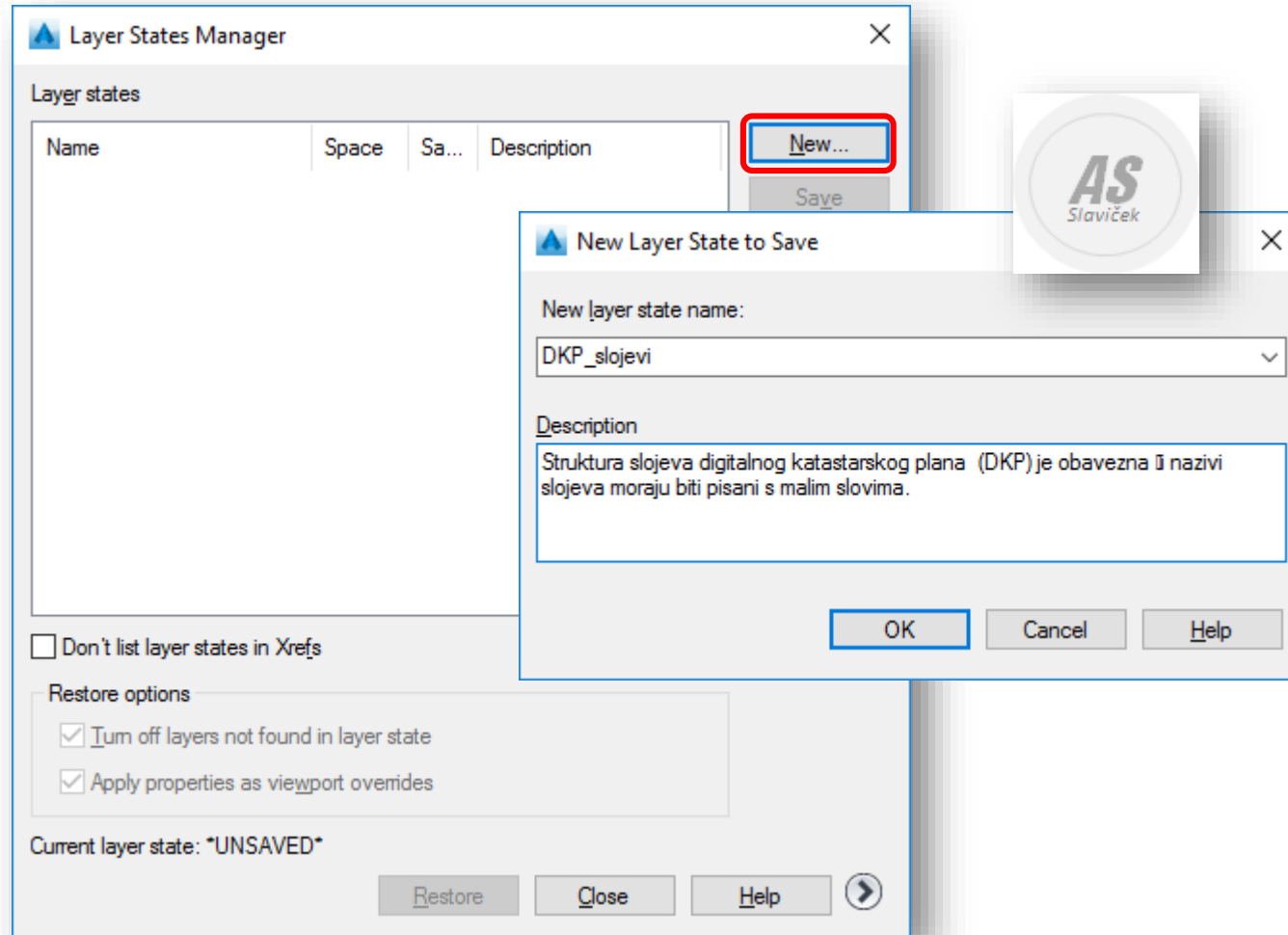


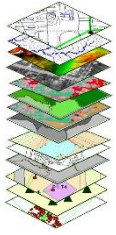
Layer States Manager



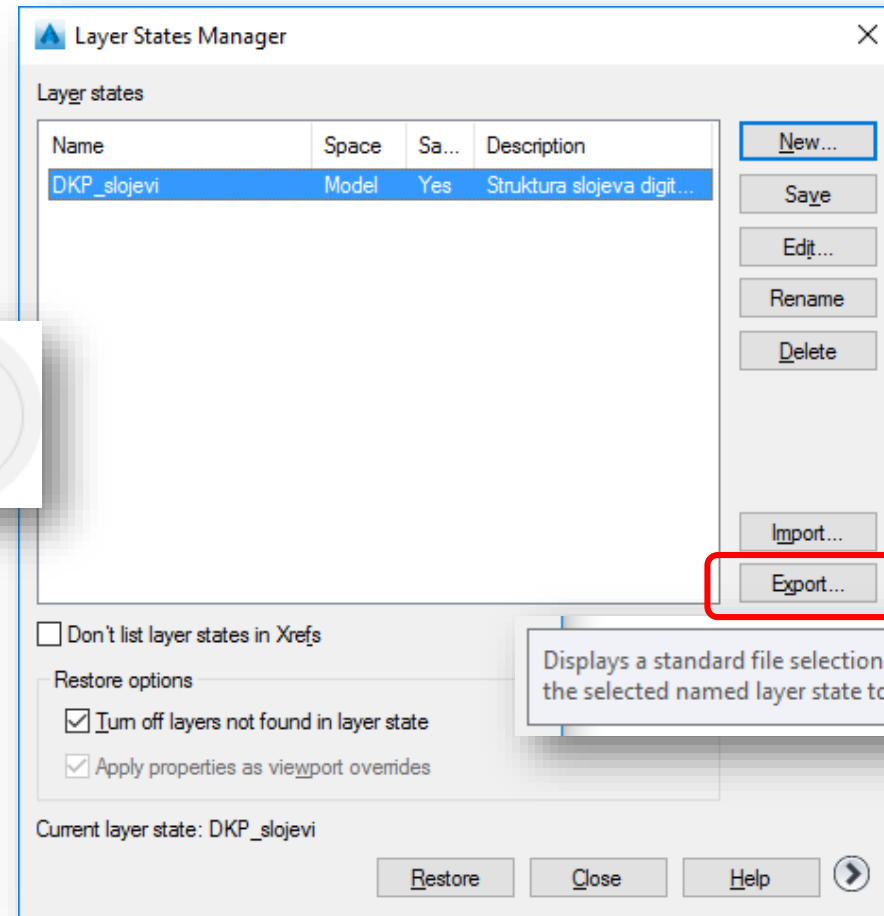
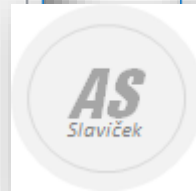
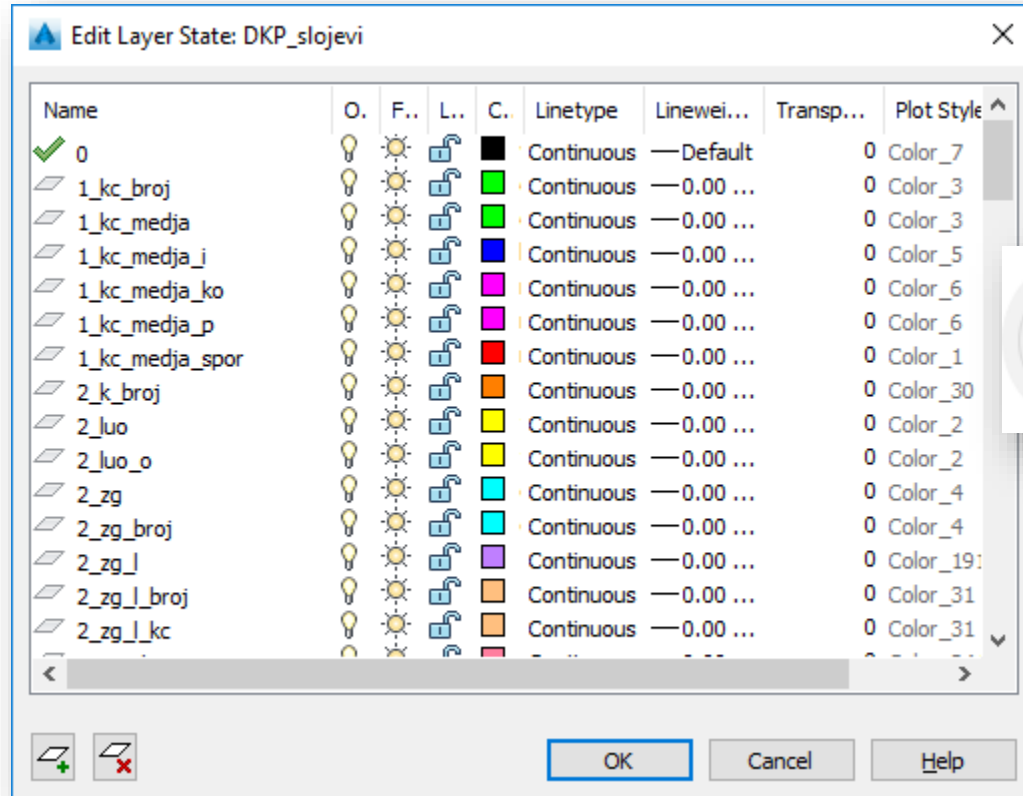


New Layer State to Save

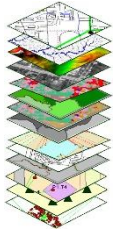




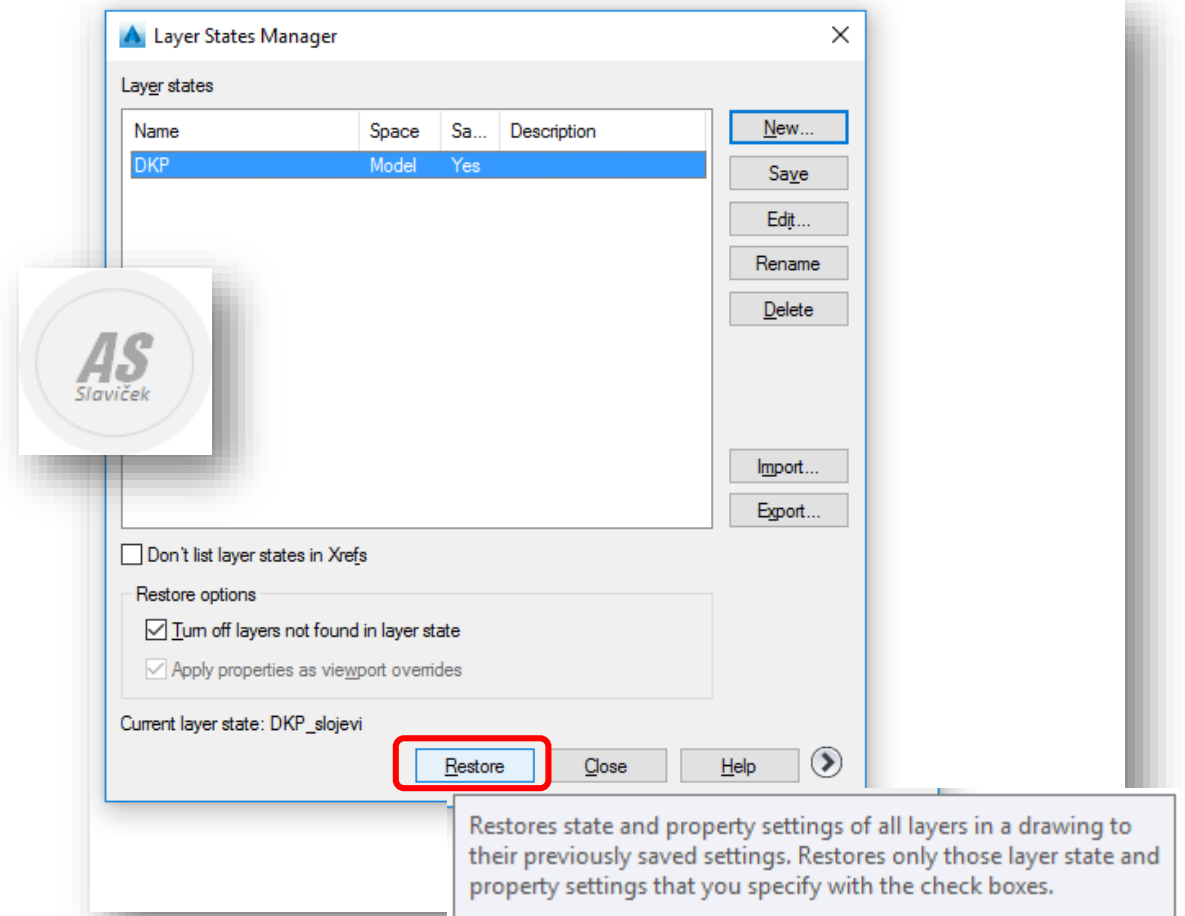
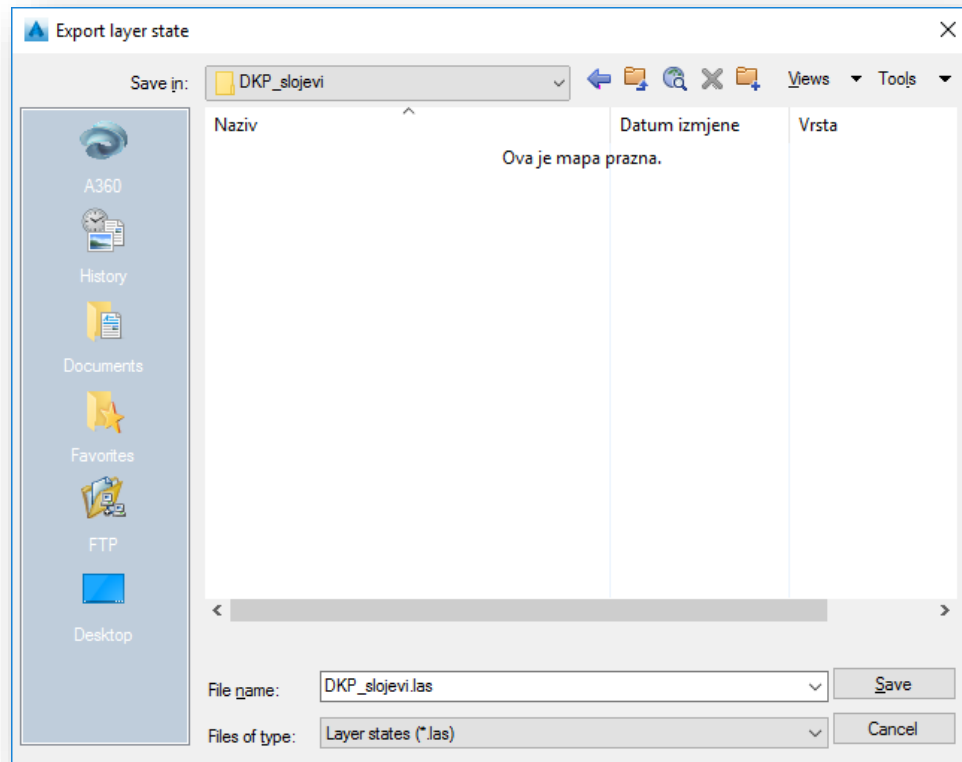
Edit

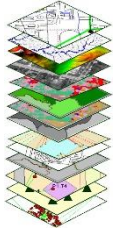


Displays a standard file selection dialog box, where you can save the selected named layer state to a layer state (LAS) file.



Export layer state

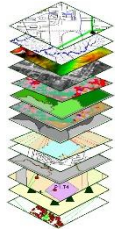




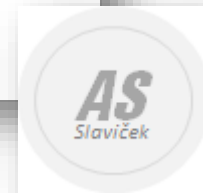
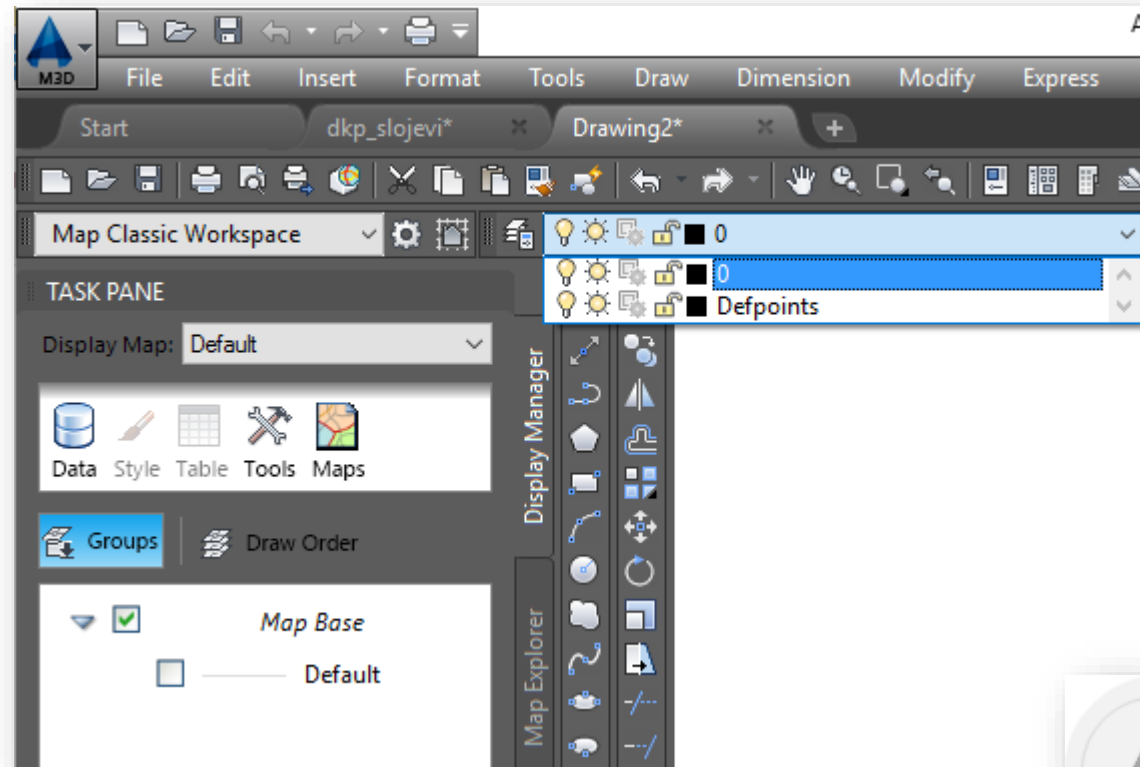
Datoteka DKP_slojevi.las

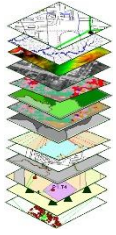
```
DKP_slojevi.las 6.10.2016. 18:34 LAS datoteka 8 KB
DKP_slojevi.las – Blok za pisanje
Datoteka Uređivanje Oblikovanje Prikaz Pomoć
0
LAYERSTATEDICTIONARY
0
LAYERSTATE
1
DKP_slojevi
91
2047
301

290
0
302
0
8
13_adrese_naziv
90
8
62
2
370
```

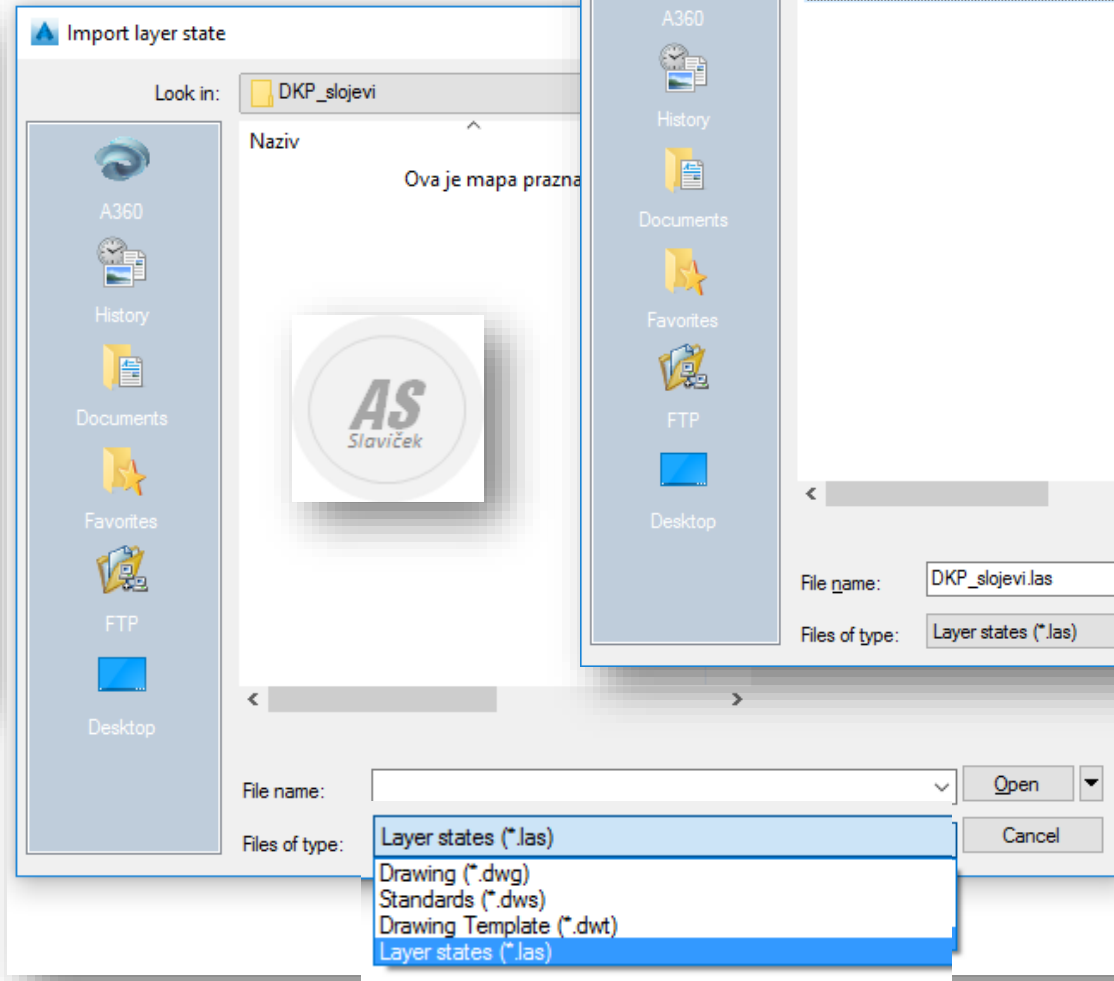
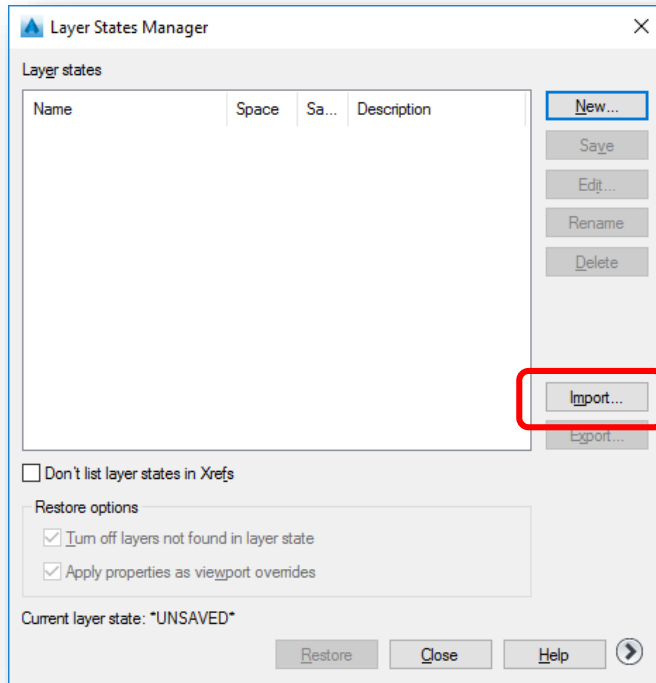


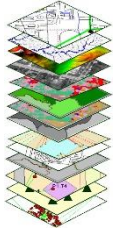
Novi crtež





Layer State Manager





Učitavanje slojeva

