

# Polarno snimanje detalja – tahimetrija

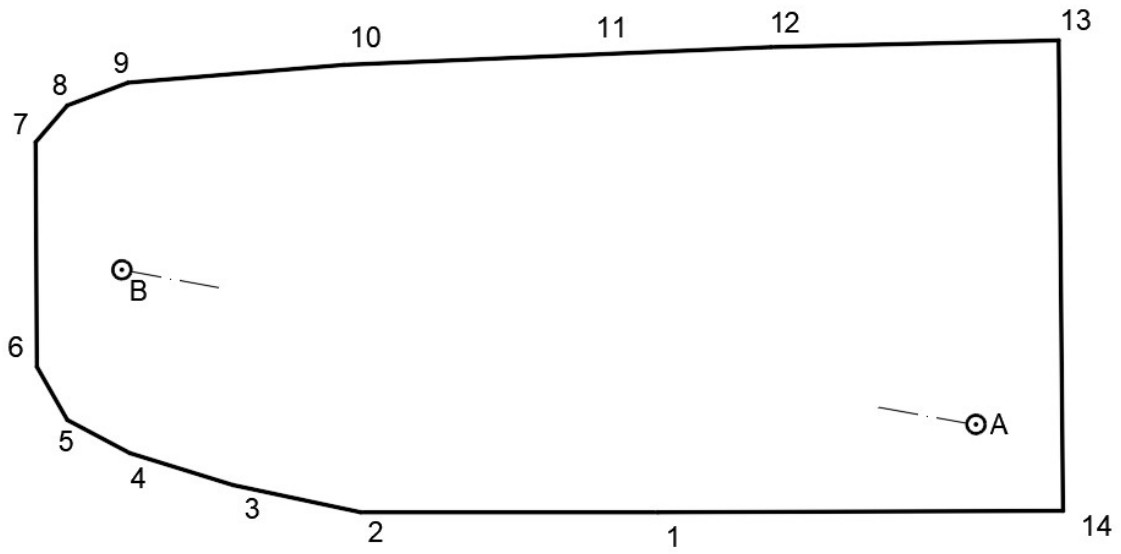
Izračunaj koordinate snimljenih točaka i nacrtaj skicu.

A (459894.13, 5070358.47)

B (459807.66, 5070374.13)

	Hz	d <sub>hor</sub>
St A		
Or B	0°0'0"	
1	334°18'33"	33,44
2	341°36'40"	62,92
3	345°4'53"	75,51
4	347°48'3"	85,73
5	350°1'14"	92,01
6	353°15'23"	95,26
7	6°26'27"	99,41
8	9°4'45"	97,50
9	11°41'37"	92,55
10	19°21'49"	73,63
11	34°20'53"	53,47
12	51°14'43"	43,45
13	91°53'25"	39,65
14	214°33'57"	12,42

Skica



Geodetska škola, Zagreb 3

SKICA 5

U Zagrebu, datum

M 1: 500 3

Izradio/la: Ime i prezime, razred 3

210

10

297